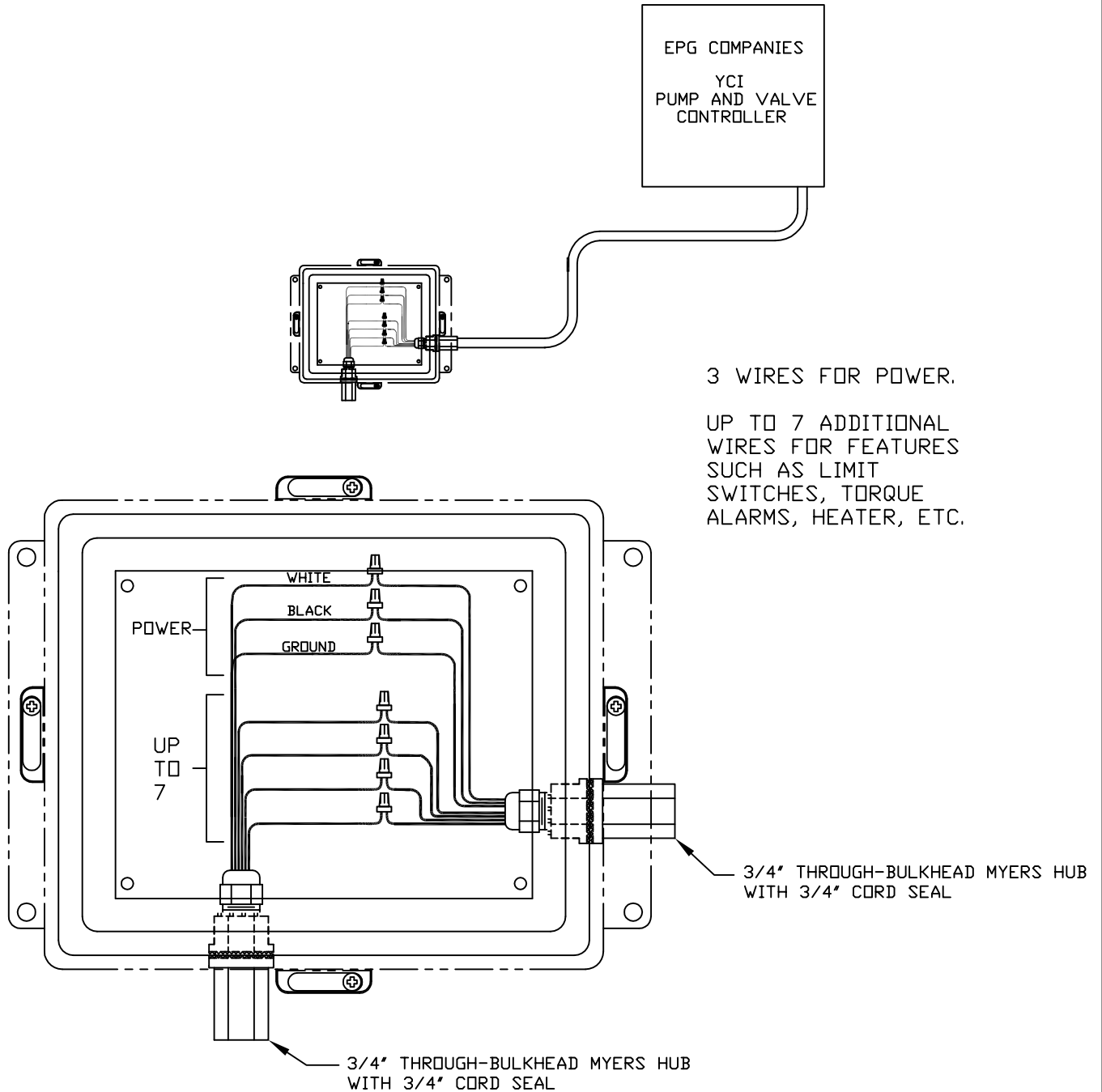


# JBLT-950S

LIQUID TIGHT BREAKOUT JUNCTION BOX (SUBMERSIBLE) FOR 1 MOTORIZED VALVE (115AC) WITH ADDITIONAL CONNECTIONS



**NOTES:**

1. ALL DIMENSIONS ARE IN INCHES.
2. BOX DIMENSIONS (OUTER WALL):  
10 8" X 6" X 4"
3. MOUNTING HOLES (3/8") FOR BOLT/SCREW,  
8 3/4" X 4" CEN. TO CEN., 4 PL.

JOB No.	XX-XXXXX
---------	----------

THIS DRAWING IS THE PROPERTY OF EPG COMPANIES FOR REFERENCE ONLY. © EPG Companies Inc. 2014		<b>EPG COMPANIES</b>		
<b>TOLERANCES</b> (EXCEPT AS NOTED)		<b>JBLT-950S TYPICAL INSTALLATION</b>		
DECIMAL ±	NO. 1	REVISIONS DATE	DESIGN JSH	MATL.
FRACTIONAL ±	2	BY	SCALE NTS	DATE 09-24-20
ANGULAR ±	1°		DRWN EJH	REV. NO.
	3		CHKD	DWG. NO. 12483-0950
	4		APPD	
	5			
	6			