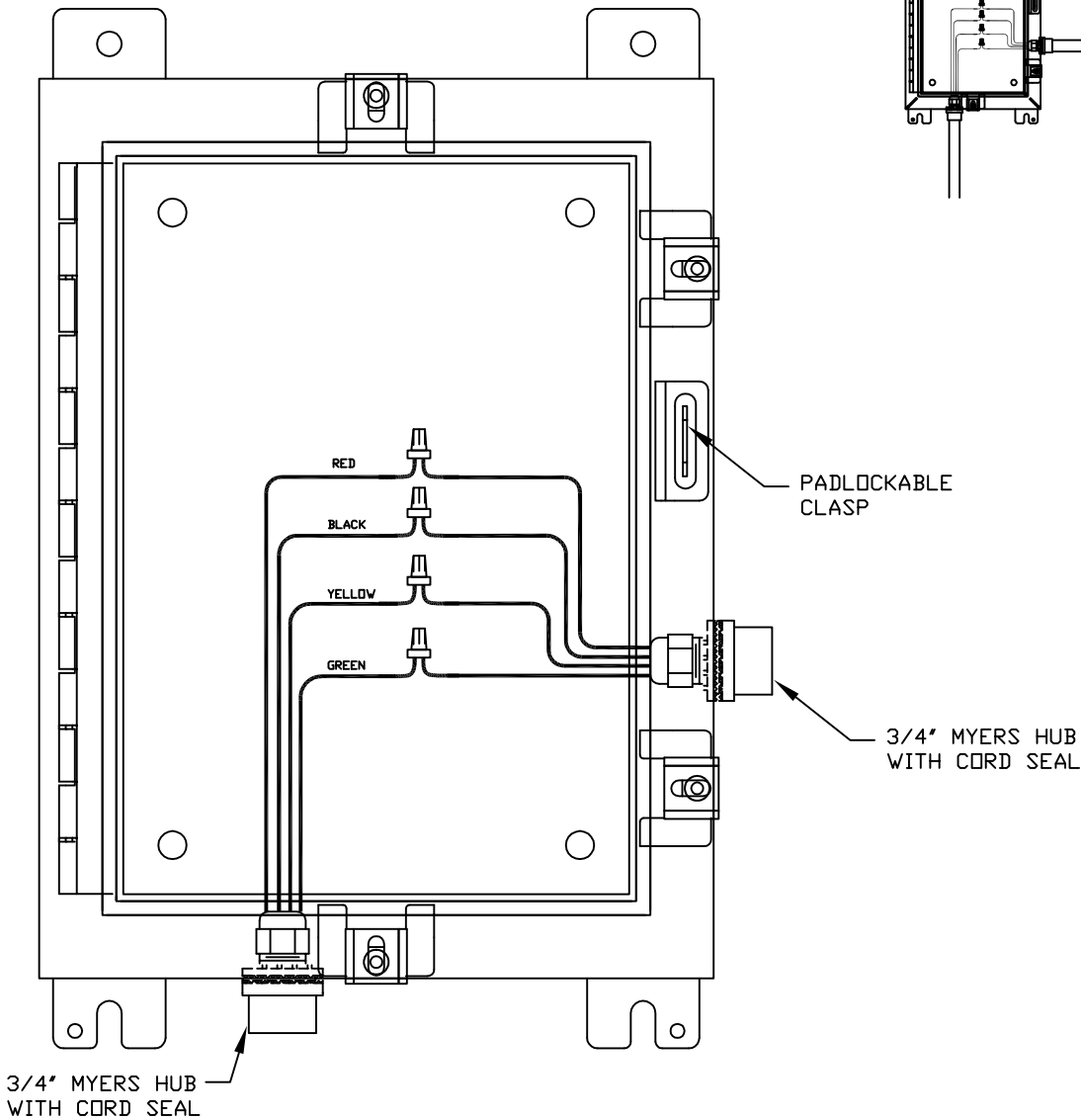
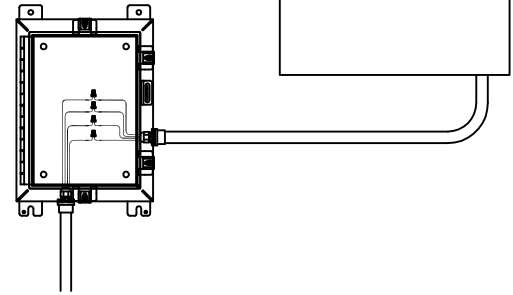


# JBLT-500-TP

TAMPER-PROOF LIQUID TIGHT BREAKOUT JUNCTION BOX FOR  
1 MOTOR LEAD, WITH PADLOCKABLE DOOR

EPG COMPANIES  
YCI  
PUMP AND VALVE  
CONTROLLER



**NOTES:**

1. ALL DIMENSIONS ARE IN INCHES.
2. BOX DIMENSIONS: 16" X 12 X 6"
3. MOUNTING HOLES (7/16") FOR BOLT/SCREW, 9-1/2" X 17-1/4" CEN. TO CEN., 4 PL.

JOB No.	20-14628
---------	----------

THIS DRAWING IS THE PROPERTY OF EPG COMPANIES FOR REFERENCE ONLY. © EPG Companies Inc. 2014		<b>EPG COMPANIES</b>	
<b>TOLERANCES</b> (EXCEPT AS NOTED)		<b>JBLT-500-TP TYP. INST.</b>	
	<b>REVISIONS</b>		
	NO.      DATE      BY		
DECIMAL ±	1	DESIGN	JSH      MATL.      DATE      10-18-19
FRACTIONAL ±	2	DRAWN	EJH      SCALE      NTS      REV. NO.
ANGULAR ±	3	CHKD	
	4	APPD	
	5		
	6		12483-0501